



PROPOSAL 'Bv2'		2014	FORM B
Pilot ID #	Unlimited Known		Flight #

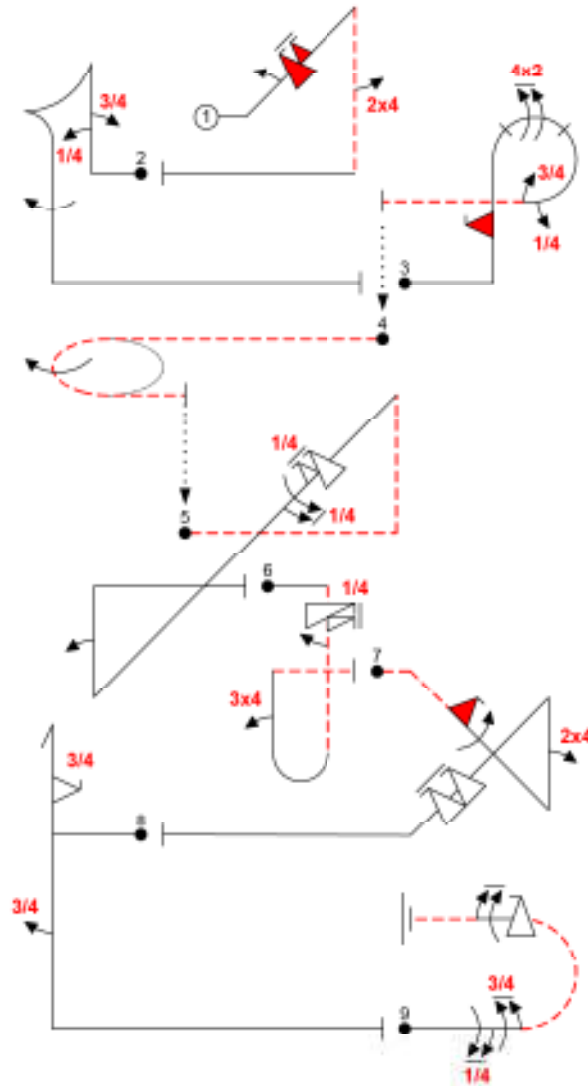


Fig 1	1.2.1.1	13	48
	9.1.2.2	6	
	9.30.2.9	19	
Fig 2	6.2.1.1	15	20
	9.1.1.1	6	
	9.1.1.3	10	
	9.1.5.4	8	
Fig 3	8.6.2.1	12	54
	8.30.4.3	14	
	9.2.5.8	15	
	9.1.3.1	2	
	9.1.5.5	6	
Fig 4	2.2.2.4	25	25
Fig 5	1.1.39.2	24	54
	9.9.4.5	13	
	9.1.4.5	9	
	9.1.1.2	8	
Fig 6	8.4.4.5	14	34
	9.31.1.5	4	
	9.1.5.2	4	
	9.6.1.3	12	
Fig 7	1.3.6.4	19	66
	8.30.4.2	13	
	9.1.4.4	8	
	9.6.1.2	9	
	9.9.4.8	17	
Fig 8	5.2.1.1	12	38
	9.9.1.5	15	
	9.1.5.3	6	
Fig 9	7.2.4.1	8	31
	9.1.5.5	9	
	9.1.5.7	11	
	9.9.8.4	13	
	9.1.3.6	10	
<b>Total K = 408</b>			

Created Using Aerial 2013™ software. ACCsim@iqaad.com





<b>PROPOSAL 'B'</b>		<b>2014</b>	<b>FORM B</b>
Plot ID #	<b>Advanced Known</b>		Flight #

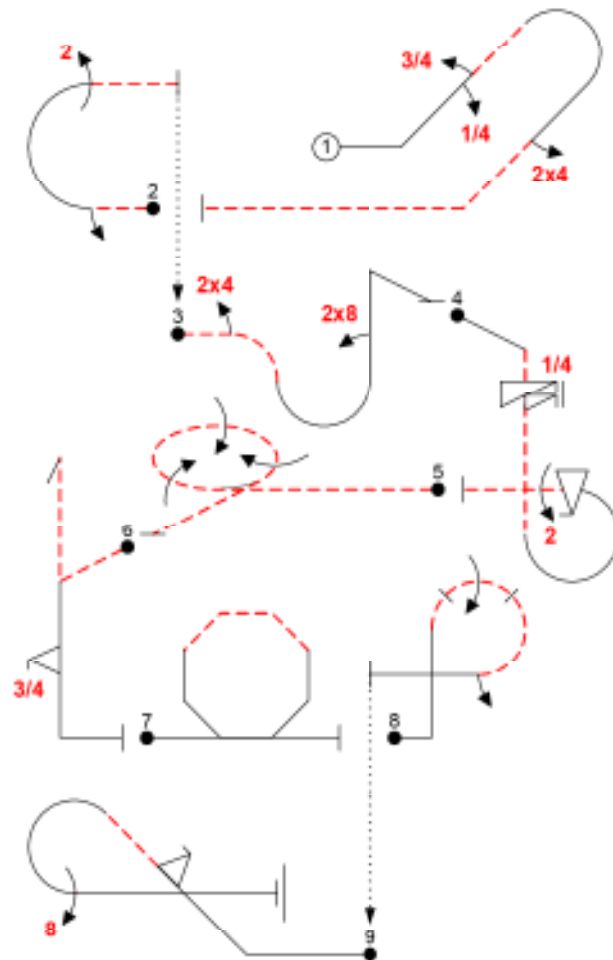
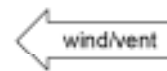


Fig 1	8.4.16.1	14	31
	9.1.2.1	4	
	9.1.2.2	0	
Fig 2	9.1.3.2	4	20
	7.2.3.2	7	
	9.2.3.4	9	
Fig 3	0.0.15.4	14	26
	9.4.3.2	5	
	9.8.1.1	7	
Fig 4	8.6.3.3	13	37
	9.11.1.5	4	
	9.9.3.4	11	
	9.2.3.4	9	
Fig 5	2.3.4.2	31	31
Fig 6	5.2.1.4	22	33
	9.9.5.3	11	
Fig 7	7.4.8.1	19	19
Fig 8	8.6.4.1	14	20
	9.1.3.4	0	
	9.1.3.2	4	
Fig 9	8.5.2.1	10	38
	9.9.2.2	13	
	9.8.3.4	15	
<b>Total K = 261</b>			

Created Using Aired 2013™ software. ACClassify@aol.com





<b>PROPOSAL 'A'</b>		<b>2014</b>	<b>FORM B</b>
Pilot ID #	<b>Intermediate/Y52 Known</b>		Flight #

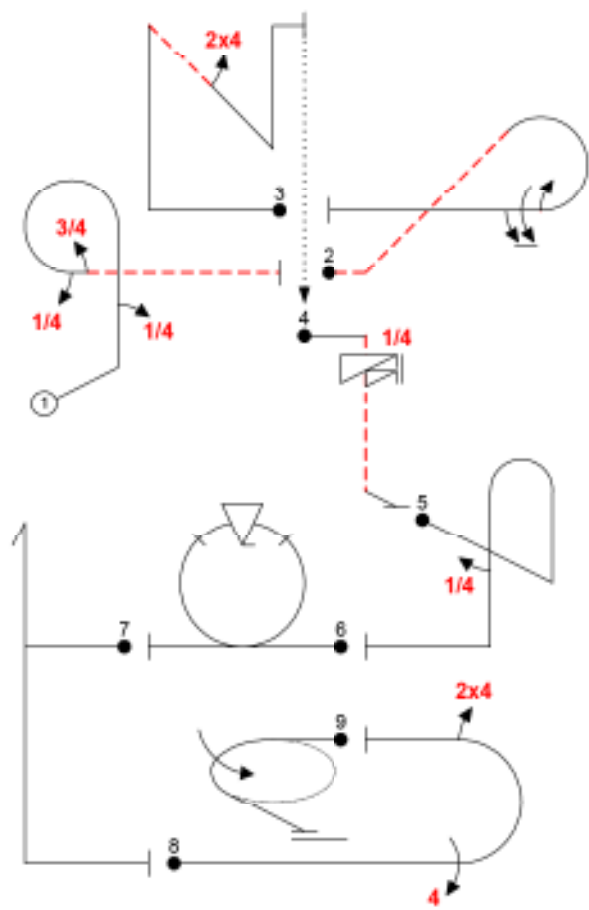


Fig 1	8.6.2.1	12	26
	9.1.1.1	8	
	9.1.3.1	2	
	9.1.3.3	6	
Fig 2	8.5.1.2	10	24
	9.1.3.2	4	
	9.1.3.8	10	
Fig 3	1.3.12.1	21	26
	9.4.4.2	5	
Fig 4	1.1.6.3	10	14
	9.11.1.5	4	
Fig 5	8.4.1.1	13	15
	9.1.5.1	2	
Fig 6	7.4.1.1	10	21
	9.9.3.4	11	
Fig 7	5.2.1.1	17	17
Fig 8	7.2.2.1	6	22
	9.4.3.4	11	
	9.4.3.2	5	
Fig 9	2.1.3.1	14	14
<b>Total K = 179</b>			

Created Using Aces 2013™ software - ACCorvids@aol.com

